

DS150



DRY CLAW VACUUM PUMP



About Us

HHV Pumps Private Limited is committed to continuously enhancing customer satisfaction by providing high quality products, effective vacuum pumping solutions and responsive services on time. We shall achieve this through:

1. Continual improvement of our products and our processes;
2. Continual development of new products which meet our customer's requirements and work well in their applications;
3. Promoting standardization of our solutions to ensure consistent quality and lowest cost of ownership;
4. Enhancing our existing skills and developing new ones through regular training;

Continuity of the core team mentored by global experts has allowed us to develop twenty two new products over the last decade. We have an all-India sales and service network with eight strategically located branches.

Our major markets include: Rough Vacuum - Pick & place, Job holding, Woodworking, Thermoforming etc.

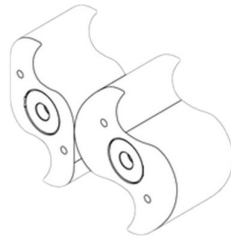
Medium Vacuum - Refrigeration and Air conditioning, Transformer oil filtration, Distillation etc.

High Vacuum - Industrial and Scientific R&D, High vacuum distillation etc.

We are the only Indian company with advanced technological capability for manufacturing Vacuum Pumps to global standards



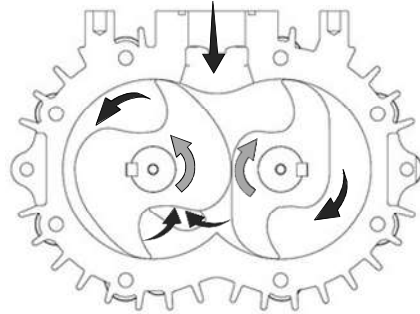
DS150



DS150 is a single stage dry claw, direct driven and air-cooled vacuum pump. The pump is designed in modular construction concept having two compartments; pumping area and gear box, separated by a piston ring and rotary shaft seals. Pump inlet port is protected by a metal wire mesh strainer to safe guard pump from entry of solid particle.

Timed gear arrangement is used to maintain consistent clearance between two rotating claws. Oil lubricated bearings running silently provides a smoother rotary motion transfer.

The enclosure on vacuum pump is designed to have cooling air circulation passing through it by radiating heat from the pump surface by means of fan fitted on pump shaft and the warm air is exhausted through the vents in enclosure.



Industries Served



General Industry



Food Industry



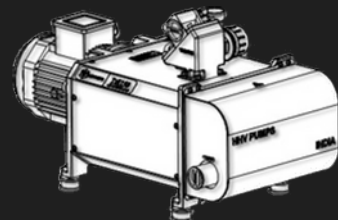
Chemical Industry

Typical Applications

- Vacuum Conveying
- Vacuum Holding
- Powder Transfer
- Vacuum Packaging
- Thermoforming
- Woodworking
- Medical Vacuum
- Solvent distillation
- Evaporation
- Sea water desalination
- Centralized vacuum

Reliable Operation

DS150 gives consistent and cost-effective results. Its simple and robust design ensures long life with maximum uptime. The components are meticulously crafted and undergo rigorous testing at each stage to eliminate leakage.



Salient Features



Design thinking

DS150 is a product of extensive research and development at our fully fledged DSIR accredited inhouse R&D facility. Its performance is backed by Customer feedback and aggressive testing.

- Built for continuous operation
- Self-balanced anti-suck back valve
- Efficient air cooling mechanism
- Selection of materials with excellent properties
- Accurately machined internal parts with close tolerances
- Inlet pressure regulator with minimum operating set pressure
- VFD compatible pump for saving energy and meeting varying demands



Oil-free operation

DS150 has an oil-free pumping chamber, considering the potential of oil contamination. Various safety precautions have been incorporated to prevent back flow of oil vapours.

- Completely oil-free pumping chamber with well-defined segregation from gear box
- Pumping chamber and gear box partition is provided with multiple seals for preventing oil leakage



Effortlessly adaptable

DS150 has a compact design with focus on accessibility. Its plug-n-play power connection with lower footprint allows quick and easy mobility.

- Compact design offers lower footprint and life cycle cost
- Angular inlet port with anti-suck back valve for connection at tighter spaces
- Built in exhaust silencer for exhaust connection to reduce noise
- Pump enclosure with noise reducing pads

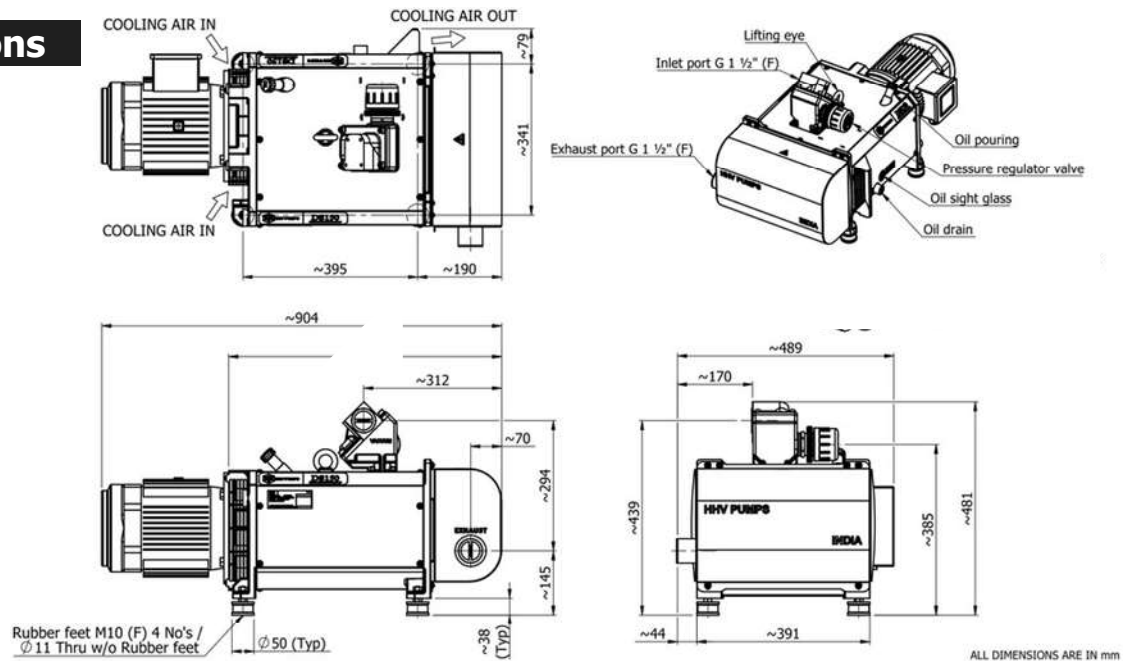


Hassle free maintenance

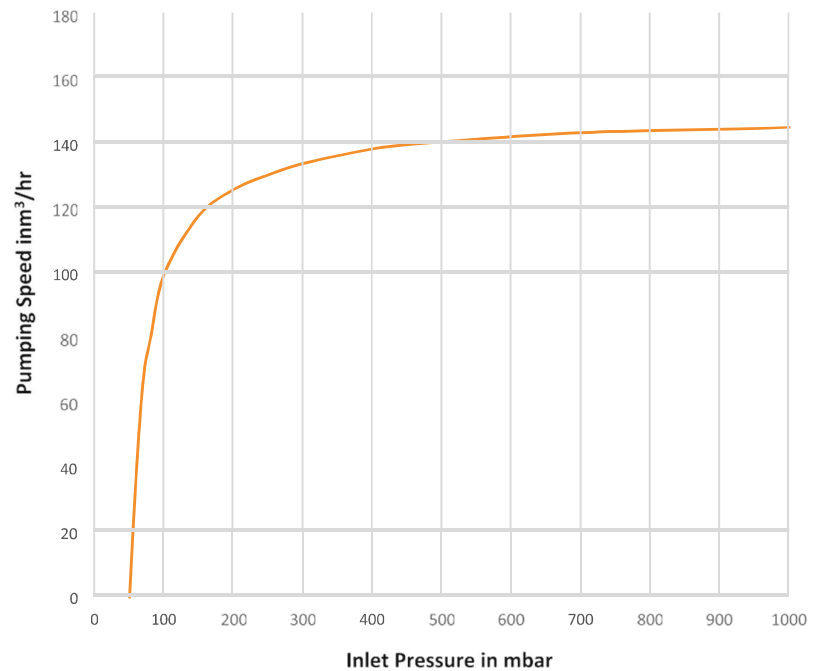
DS150 has an improved life span due to its simple and robust design. This coupled with our after sales services ensure uninterrupted operation

- Modular construction for repairing parts without obstructions
- Pan India service network backed by well-developed spares supply chain.
- Preventive and flexible maintenance plans to suite customer needs
- Access to silencer, ports and other parts made easy for maintenance

Dimensions



Performance Curves



Specifications

Particulars	Unit	DS150
Nominal pumping speed at 50Hz	m ³ /h (L/min)	145 (2416)
Ultimate vacuum	mbar	50
Ultimate vacuum in continuous operation	mbar	100
Nominal power rating at 50Hz	kW (HP)	3.7 (5)
Motor rotational speed at 50Hz	rpm	3000
Weight	kg	159
Inlet connection		G 1-1/2" F
Outlet connection		G 1-1/2" F
Oil capacity	Lts	0.9
Recommended oil	Standard	HHVP GO150 Gear Oil
Power supply		Three Phase 415V, 50Hz*



Authorise Sales & Service Distributor For

